

Bluetooth

You can use bluetooth devices such as a keyboard with your iPad.

The bluetooth setting can be found under Settings > General.

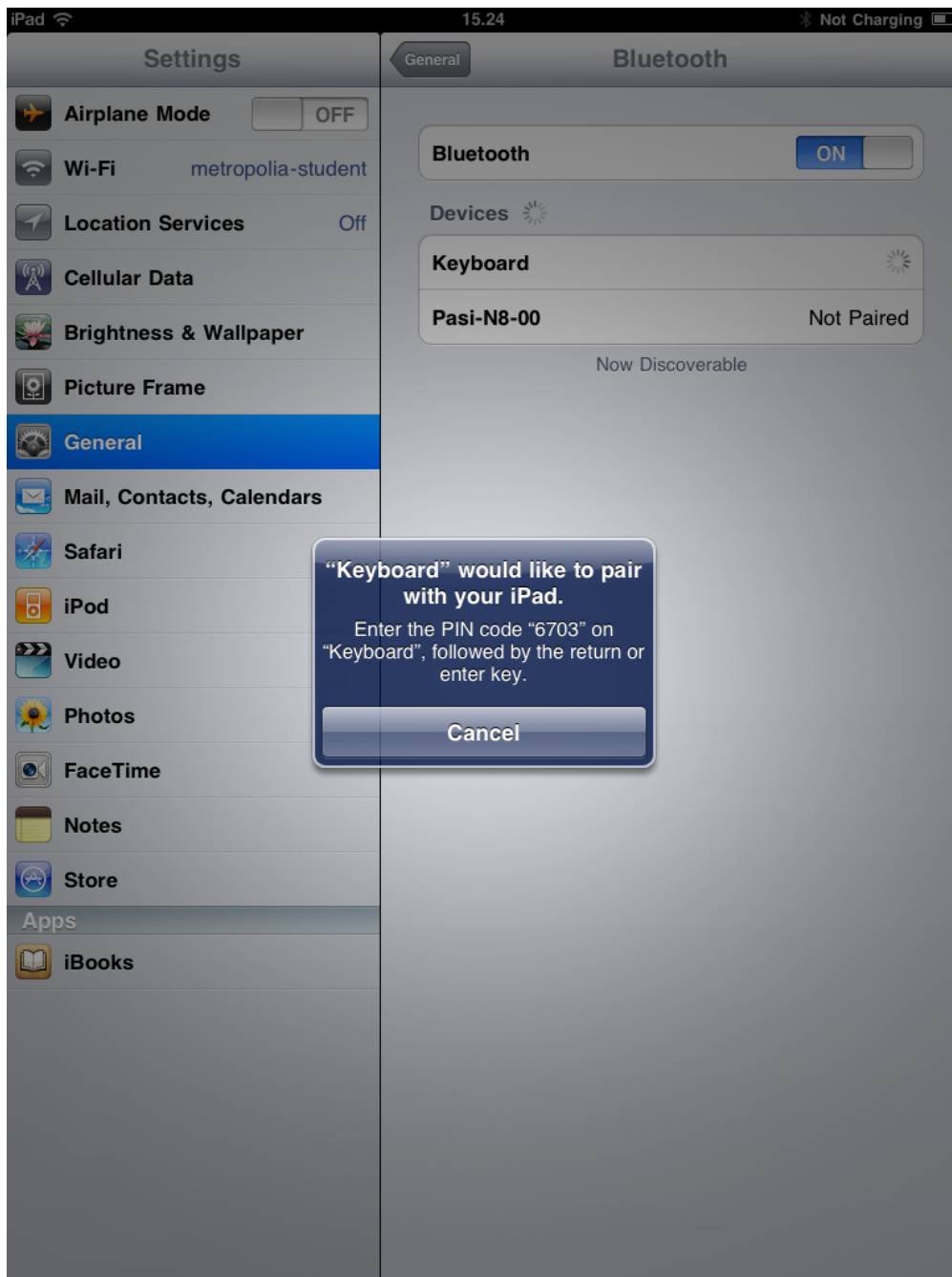


If you need bluetooth, turn it on. Otherwise keep it turned off to save the battery.

When iPad detects a bluetooth device, the device will be shown in the list.



You can pair the device you want by selecting it from the list. In the example below, a bluetooth keyboard is paired by typing the given PIN code on the keyboard.



Bluetooth